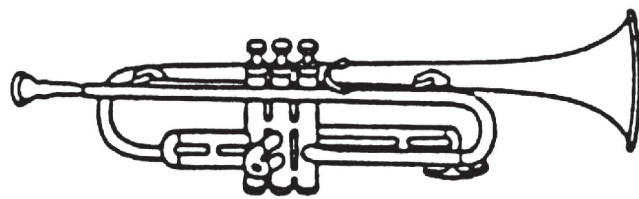


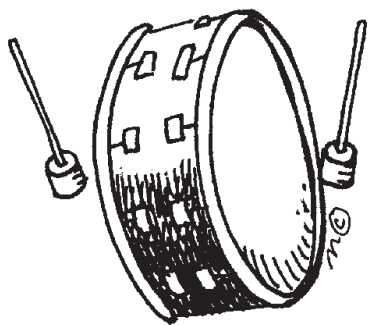
# Jedzie pociąg



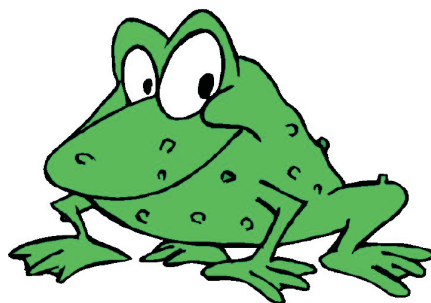
Jedzie pociąg **FU FU FU**



Trąbka trąbi **TRU TU TU**



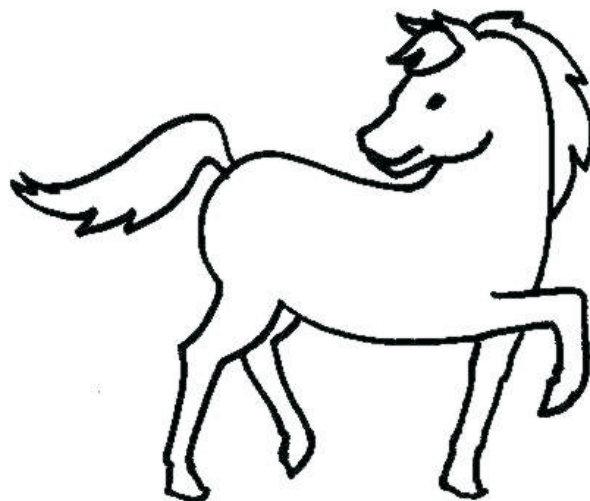
A bębenek **BUM BUM BUM**



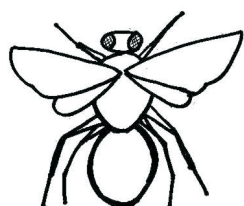
Na to żabki **KUM KUM KUM**



Woda kapie **KAP KAP KAP**



Konik człapie **CZŁAP  
CZŁAP CZŁAP**



Mucha bzczy **BZZ BZZ BZZ**



A wąż Syczy **SSS SSS SSS**